



Hearts made from Self-Hardening Clay

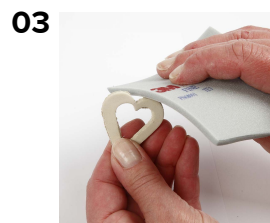
STEP BY STEP 023
Inspiration: 11748



01 Roll out the clay in approx. 2mm thickness.



02 Let them dry for approx. 24 hours and – if necessary - gently sand them along the edges using a sanding sponge.



03 Let them dry for approx. 24 hours and – if necessary - gently sand them along the edges using a sanding sponge.



04 Varnish both sides and let it dry.



05 Cut a piece of natural twine to your desired length and tie around the heart.



Self-hardening Clay, Light Grey, 1000 G, 1 Pack 789010



Metal Cutters, Heart, 40x40 mm, 3 pc, 1 Pack 789010



Acrylic Varnish, Glossy, 100 ml, 1 Bottle 392660



Acrylic Varnish, Glossy, 250 ml, 1 Bottle 39266

Natural Hemp, 1-2 mm, Natural, 30 M, 1 Roll 503244

Rolling Pin, L: 23 cm, 4.5 cm, Light Blue, 1 pc 78285

Gold Line Brushes, Flat, 2+8+12, W: 3+9+12 mm, 3 pc, 1 Pack 100267

Self-hardening Clay, Light Grey, 1000 G, 12 Pack 78901

Hearts made from Self-Hardening Clay

Roll out self-hardening clay thinly. Cut out the hearts with heart shape cutters. Dry and varnish with acrylic lacquer.